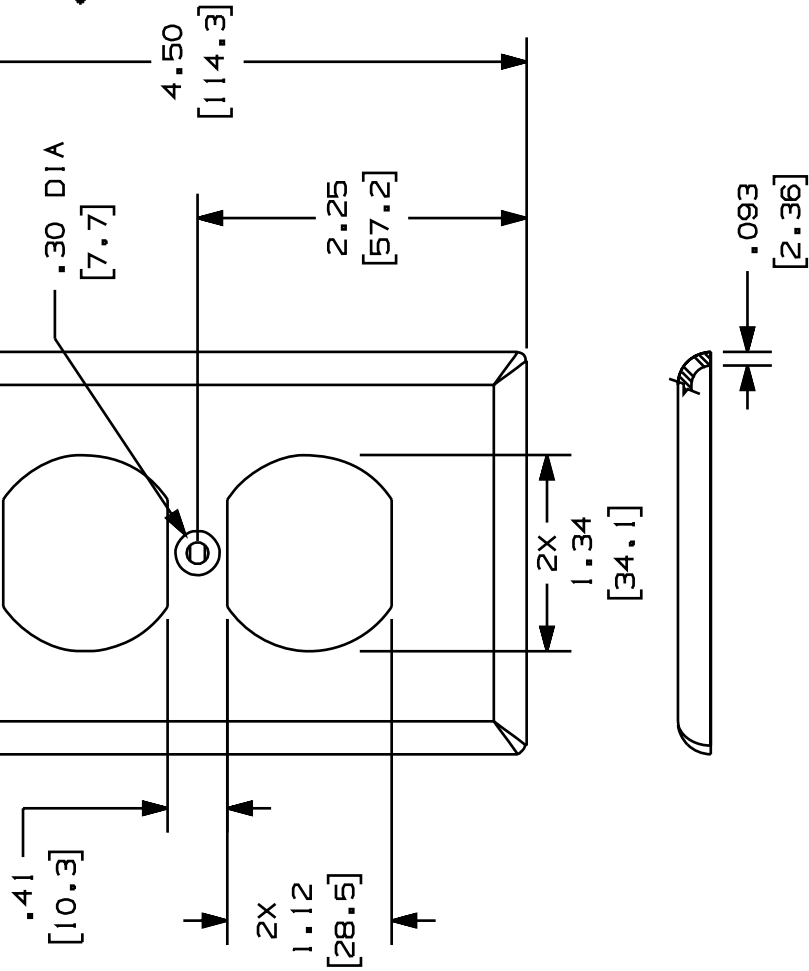
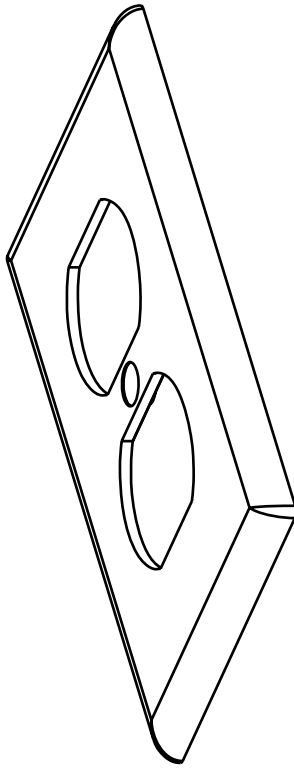


THIS COPY IS PROVIDED ON A RESTRICTED BASIS AND IS NOT TO BE USED IN ANY WAY DETRIMENTAL TO THE INTERESTS OF PANDUIT CORP.

PANDUIT P/N	WEIGHT
CPI06**	.360 LB/10 PCS (163.8 g/10 PCS)



- NOTES:
- **1. SEE CURRENT CATALOG FOR ADDITIONAL PART NUMBER SUFFIXES TO INDICATE COLOR AND OR PACKAGE QUANTITY.
 2. ONE (1) #6-32 X 1/2" SLOTTED OVAL HEAD SCREW IS INCLUDED WITH THIS PART.
 3. DIMENSIONS IN PARENTHESES ARE IN METRIC.
 4. PART ACCEPTS "106" DUPLEX MODULE FRAME. CF1064.



CAD FILE NAME/LAYERS (9736402) M00124BA_DC_OOB.PRT

PANDUIT

CORP. TINLEY PARK, ILLINOIS

CLASSIC SERIES "106"
FACEPLATE (CPI06**)
CUSTOMER DRAWING

UNLESS OTHERWISE SPECIFIED,
DIMENSIONAL TOLERANCES ARE:
(.X) ± .010 (1.3)
(.XX) ± .031 (.8) ANGLES ±

UNLESS OTHERWISE SPECIFIED,
ALL DIMENSIONS ARE GIVEN
IN INCHES, THIRD ANGLE PROJECTION.

DRAWN BY RCA MAT'L: NONE

SCALE

DATE 08-29-97

ABS

DRAWING NO.

CHECKED BY CEF

00124-02

SIZE

A

REV	DATE	BY	CHK	DESCRIPTION	ECN	CHK	CUST	SUP
1	6/28/99	DW		A. REVISED TITLE NAME.	00124-02			
R	08-29-97	RCA	CEF	RELEASED TO PRODUCTION.	00124-02	CEF	CEF	